

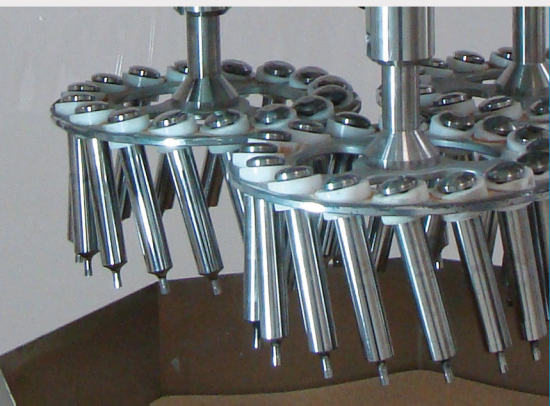


PA300 PHARMA

Automatic machine for micro-fine polishing of tablet press punches. PA300 pharma – model especially designed for pharmaceutical customers.

PA300 PHARMA

Polishing machine designed by us allows to polish in automatic cycle up to 48 punches of format EU19 (B) and up to 36 punches of format EU1" (D). Holders are predesigned to fit whole set of upper or lower punches from the most common production tablet press sizes.



Nortec - Industrial Solutions

We are engineering company with experience in designing of the individual solutions for industry, mainly in pharmaceutical branch.

We take inspirations from experience by cooperation with our European partners as well we use fact of high working culture and reliability learnt during the years of partnership.

We use in our machine known and checked way of dry polishing with the polishing granulate and paste. Holders with punches are plunged and dragged in hopper filled with walnut shell granulate mixed with special polishing paste with proper content of aluminium oxide.

Each of three holders rotates with increased speed comparing to the whole polishing head. This system guarantees access of the granulate to each side of the punch. In the nearest future we will add special holders for dies to the list of accessories.

PA300 pharma unit is a special version designed for the customers from pharmaceutical branch. It characterizes high quality of manufacturing, stainless steel covering and construction elements, using of the touch screen control panel with user-friendly menu available in different languages. We offer also qualification documentation IQ/OQ with ready to fill qualification tests.



BENEFITS OF POLISHING

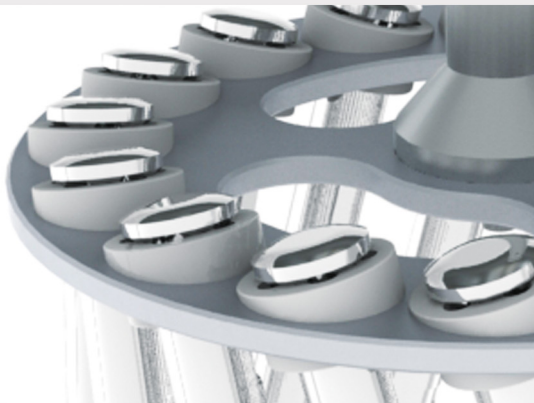
- Lowering of the punch stiffness in the die tables of the tablet press.
- Higher efficiency of punch cleaning after polishing, because of smoother surfaces.
- Smaller tendency to stick of the tablets to punches.
- Removing the corrosion spots - faults appearing during incorrect maintenance and storing.

The average time of the polishing cycle is about 30-40 minutes and of course depends on the punches condition before polishing. Operator can precisely set the parameters of the process as total polishing time, direction time right/left, speed of the polishing head.

There is available free space for storing the spare granulate and paste in the bottom part of the machine.



Punch before and after polishing process.

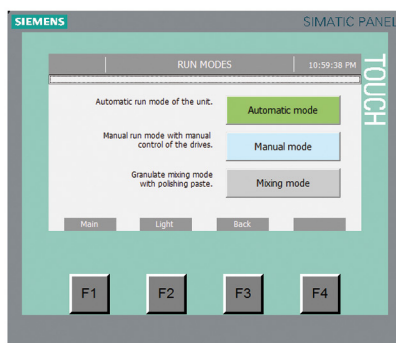
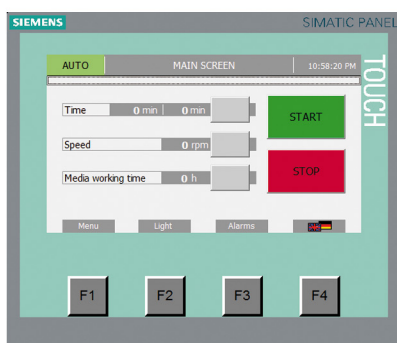
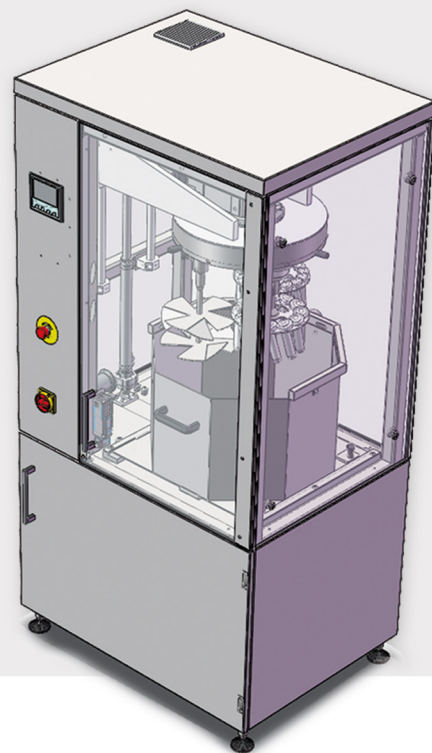


TECHNICAL SPECIFICATION

Machine is controlled by 4,3" colored touch screen operating panel. User-friendly menu allows for easy setting of the parameters and problem-free operating of the machine. On the alarm list – diagnoses tells to the operator actual state of the polisher.

There are defined three run modes: automatic run mode, manual mode and mixing mode. Each of them is dedicated to different job and on the screen operator can see only necessary information.

In due time system, based on the polishing cycles timer – will inform about necessity of exchange of the polishing granulate, which guarantees the constant conditions of the polishing.



Technical data:

- installed power 2 kW
- power supply 230V, 50 Hz, 3m cable

MACHINE DIMENSIONS	
Height	1940 mm
Width	970 mm
Depth	730 mm

HOLDERS TYPES			
Type	Quantity of punches per holder	Qty of holders per machine	Total qty of punches
Holder "B"	16	3	48
Holder "D"	12	3	36



NORTEC J.Pfeiffer-Chrzanowska
 ul. Cytrusowa 28, Józefostaw, 05-500 Piaseczno
 tel. 0048 603 74 19 74, fax: 0048 22 713 89 77,
 info@nortec.pl, www.nortec.pl